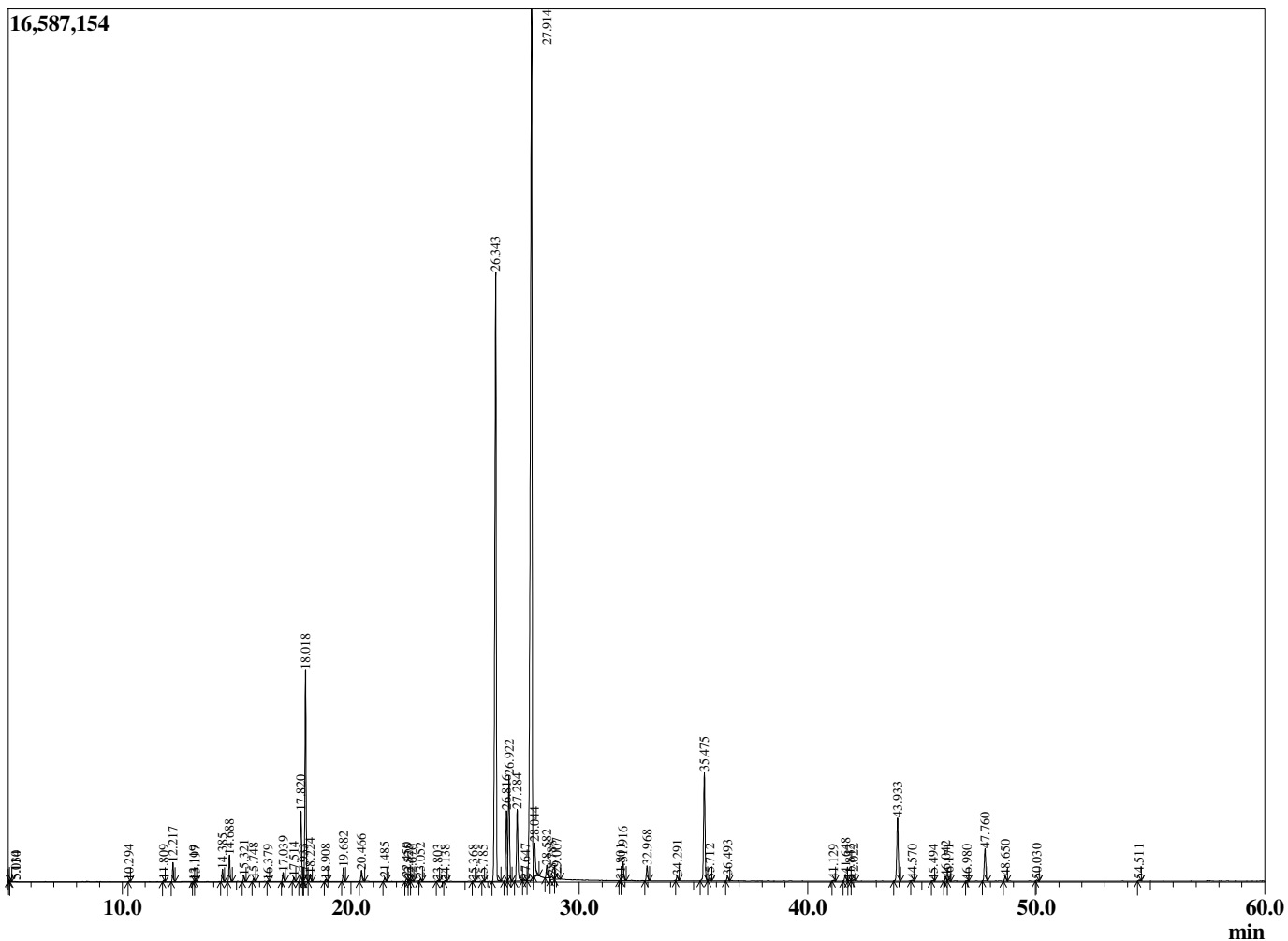


Sample Information

Sample Type : Essential Oil  
 Sample Name : Mentha piperita  
 Peppermint USA  
 Lot# USR34-RW  
 Country: USA



Chromatogram Mentha piperita



R.Time	Name	Area%
5.034	1-Pentanol	0.01
5.110	2-Methyl butanol	0.01
10.294	2,5-Diethyltetrahydrofuran	0.02
11.809	alpha-Thujene	0.03
12.217	alpha-Pinene	0.52
13.119	Camphene	0.01
13.197	3-Methylcyclohexanone	0.01
14.385	Sabinene	0.36
14.688	beta-Pinene	0.81
15.321	Myrcene	0.17
15.748	3-Octanol	0.09
16.379	alpha-Phellandrene	0.02
17.039	alpha-Terpinene	0.28
17.514	para-Cymene	0.13
17.820	Limonene	2.31
17.933	beta-Phellandrene	0.04
18.018	1,8-Cineole	6.66
18.224	cis-beta-Ocimene	0.24
18.908	trans-beta-Ocimene	0.06
19.682	gamma-Terpinene	0.45
20.466	trans-Sabinene hydrate	0.38
21.485	Terpinolene	0.12
22.450	Linalool	0.12
22.525	cis-Sabinene hydrate	0.04
22.676	2-Methylbutyl-2-methylbutyrate	0.04
23.052	2-Methylbutyl isovalerate	0.09
23.803	3-Octyl acetate	0.03
24.138	Dehydrosabinone	0.03
25.368	Unidentified	0.02
25.785	Isopulegol	0.02
26.343	Menthone	23.76
26.816	Menthofuran	2.56
26.922	Isomenthone	3.71
27.284	Neomenthol	2.67
27.647	Unidentified	0.11
27.914	Menthol	41.07
28.044	Terpinen-4-ol	1.49
28.582	Isomenthol	0.44
28.788	Neoisomenthol	0.18
29.007	alpha-Terpineol	0.24
31.801	3-Hexenyl isovalerate	0.02
31.916	Pulegone	0.68
32.968	Piperitone	0.54
34.291	Neomenthyl acetate	0.18
35.475	Menthyl acetate	4.22
35.712	Dihydroedulan	0.04
36.493	Isomenthyl acetate	0.18
41.129	alpha-Copaene	0.03
41.648	beta-Bourbonene	0.26
41.842	alpha-Bourbonene	0.02
42.022	beta-Elemene	0.07
43.933	beta-Caryophyllene	2.55
44.570	beta-Copaene	0.03
45.494	Unidentified	0.02
46.042	trans-beta-Farnesene	0.17
46.171	alpha-Humulene	0.05
46.980	Unidentified	0.02
47.760	Germacrene D	1.30
48.650	Bicyclogermacrene	0.20
50.030	delta-Cadinene	0.04
54.511	Viridiflorol	0.04
		100.00